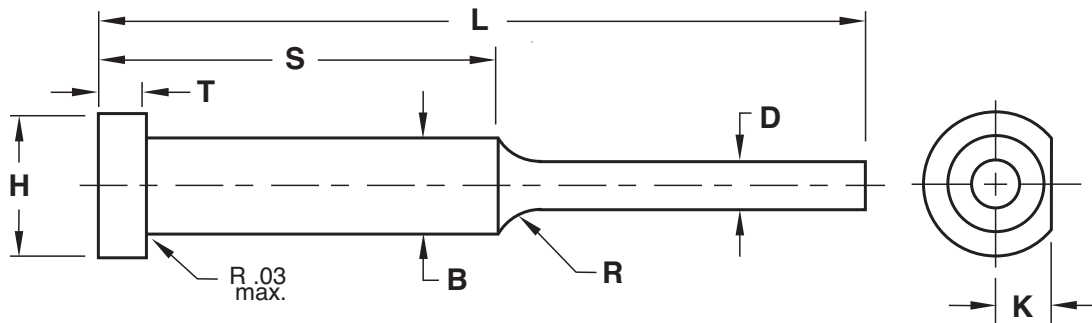




STANDARD TOLERANCES		
EJECTOR PINS		
D	-.0004 -.0007	-.01 -.02
B	+.000 -.001	+.00 -.02
CORE PINS		
D	+.0005 +.0000	+.02 +.00
B	+.0005 +.0010	+.01 +.02
L	+.060 -.000	+2.0 -0.0
H	+.000 -.010	+.00 -.05
T	+.000 -.002	+.00 -.05
K	+.002 -.000	+.05 -.00
S	±.03	±1.0
INCH		METRIC



Material

<input type="checkbox"/> Ejector Pin	<input type="checkbox"/> Ultra Pin	<input type="checkbox"/> Core Pin	<input type="checkbox"/> Other:
Material = H-13	Material = H-13	Material = H-13	Material _____
Core = 40-44 Rc	Core = 40-44 Rc	<input type="checkbox"/> Hard = 50-55 Rc	Core Hardness _____
Surface = 65-70 Rc	Surface = 65-70 Rc	<input type="checkbox"/> Soft = 30-35 Rc	Surface Hardness _____
	Treatment = Chrome		Treatment _____
	Final pin tolerances: -.0003/- .0006		

PIN #1			
Dimension	Tolerance		
D	<input type="checkbox"/> Standard Ej Pin		+
	<input type="checkbox"/> Standard Core Pin		-
B	<input type="checkbox"/> Standard Ej Pin		+
	<input type="checkbox"/> Standard Core Pin		-
L	<input type="checkbox"/> Standard		+
			-
H	<input type="checkbox"/> Standard		+
			-
T	<input type="checkbox"/> Standard		+
			-
S	<input type="checkbox"/> Standard		+
			-
K	<input type="checkbox"/> Standard		+
			-
R	<input type="checkbox"/> Standard = .25" / 10mm		
	<input type="checkbox"/> To Suit		
Quantity:			

PIN #2			
Dimension	Tolerance		
D	<input type="checkbox"/> Standard Ej Pin		+
	<input type="checkbox"/> Standard Core Pin		-
B	<input type="checkbox"/> Standard Ej Pin		+
	<input type="checkbox"/> Standard Core Pin		-
L	<input type="checkbox"/> Standard		+
			-
H	<input type="checkbox"/> Standard		+
			-
T	<input type="checkbox"/> Standard		+
			-
S	<input type="checkbox"/> Standard		+
			-
K	<input type="checkbox"/> Standard		+
			-
R	<input type="checkbox"/> Standard = .25" / 10mm		
	<input type="checkbox"/> To Suit		
Quantity:			

FAX TO 800-462-6653 OR E-MAIL TECH@PROCOMPS.COM

CONTACT:	COMPANY NAME:	PHONE #:	FAX #:
REFERENCE #:	ACCOUNT #:	E-MAIL ADDRESS:	