

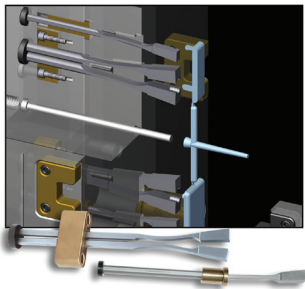


ENGINEERED FOR PERFORMANCE

Reliable performance of production moulds is a critical factor to a company's overall profitability. Now Progressive and BPM Korea Co. are aligned to bring new innovations to the mould manufacturing market in Korea.

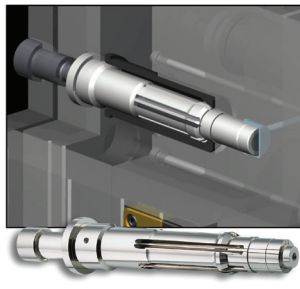
FlexiCores

A space-saving and economical standard method for moulding and releasing undercuts. Designed for smooth performance, the Flexi-Core is available in both metric and inch sizes.



Collapsible Cores

Decrease cycle time, mould size and press size with this proven alternative to typical gear/rack systems. Standard cores can be provided with finished threads machined.



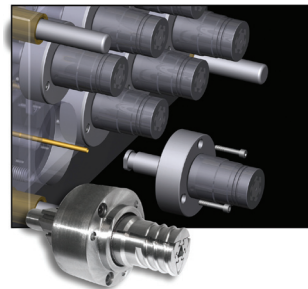
SRT Slide Retainers

Reliably secure slides in location with Progressive's SRT. Its unique roller design eliminates galling of slide surfaces, is extremely compact and ideal for clean room or greaseless environments.



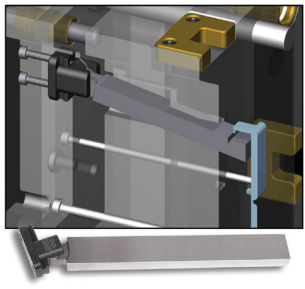
DT Collapsible Cores

Mechanically actuated to eliminate the cycle times of complex gear and rack approaches, resulting in a simplified "open-shut" tool that is serviceable from within the press.



UniLifters

Release undercuts with the globally accepted method for reliable performance. With its unique materials and innovative design, tooling engineers can now specify a proven lifter system for their tools.



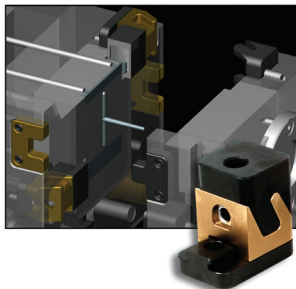
CounterViews

Monitor mould activity for proper maintenance and management with the industry's leading cycle counter. Each features a unique laser etched "URL/Serial #" to assist in accessing tool information online.



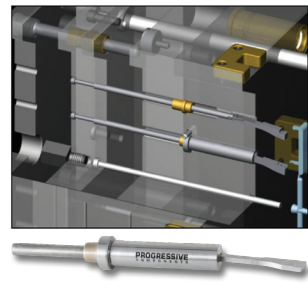
CamActions

Reliably pull mould details while reducing extreme conditions associated with angle pins and side actions. Progressive's CamActions help ease the design, build and maintenance processes of your tools.



Lifter Blades & Cores

For small undercuts and for detail in restricted places, Lifter Blades and Lifter Cores provide a parallel lift and a positional hold of the component. Its compact design can be utilized where other approaches cannot.



With the BPM Korea Co. and Progressive alliance, tooling engineers throughout Korea can now access these innovations to simplify mould building, reduce mould downtime, and help make manufacturing more profitable.



BPM Korea Co. • #417-1, Cheongyo-ri, Bibong-myeon • Hwaseong-si, Gyeonggi-do • 445843 Korea
T: 82-31-357-6824 • F: 82-31-357-6825 • dhkim@bpmkorea.com • www.procomps.com/bpm